

TECHNOLOGY & PLATFORMS

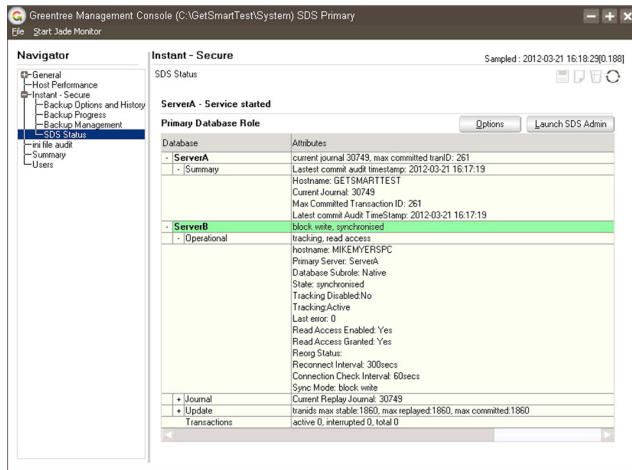
PRIMED
4U
TECHNOLOGIES
GREENTREE 3D
PRIMED 4U

TECHNOLOGIES

GREENTREE
SECURE
PRIMED 4U
GREENTREE
SECURE

Key Benefits

- Multi-choice backup & recovery options
- Full electronic trading protection
- Downtime is minimised
- Peace of mind



If your system crashes, you'll be back up and running straight away.

It's easy to get caught up with all the clever things that are happening in business computing, but you also have to cover the fundamentals – like operational security.

The web is all-pervasive today; many smaller businesses have moved into e-commerce, but in doing so, they've created vulnerabilities that they don't have well covered. Recovering a lost transaction once meant just looking for a carbon copy – not any more. Lose an electronic transaction, and it's gone down a black hole.

Greentree is at the forefront of data security, and Greentree Secure offers something which is priceless: peace of mind. We believe it's the most advanced and robust backup & recovery product on the market.

Any good security product must ensure that when disaster strikes, whatever is stored in your computer system can be recovered. But Greentree Secure addresses another crucial question:

How much downtime can you tolerate in order to get everything back?

Greentree Instant Secure

Instant means just that – if your system crashes, you're back up and running straight away. It's designed for customers that need data recovery to point of failure immediately, and provides a hot-swap Greentree system. You're totally protected – no more black holes. You can set up several mirrors if you want to, and they can be stored on-premise or in the cloud. It's a cost-effective solution for businesses that need to be operational 24/7.

Greentree Total Secure

Greentree Total Secure enables Greentree to be recovered to a point prior or up to the point of failure. It offers a managed backup & recovery process for those businesses that feel they can afford to wait a bit to be restored to fully operational, with no re-keying required.

60% OF BUSINESSES THAT LOSE THEIR DATA WILL FAIL WITHIN 6 MONTHS

93% OF BUSINESSES THAT FAIL TO RECOVER FROM DATA LOSS WITHIN 10 DAYS WILL FILE FOR BANKRUPTCY*

* Source: National Archives & Records Administration in Washington

Greentree Partial Secure

Then there is Greentree partial Secure, which is applicable to businesses that do not use Greentree web or mobile applications, and that maintain a complete paper trail that can be used to re-key data lost between the time of failure and their last good backup. Of course, there's the risk that some stuff just won't be there. And honestly, is that a viable option in today's world?

What does Greentree Secure take to implement?

Greentree Partial Secure is included in your base Greentree system. Greentree Instant Secure and Total Secure require additional licensing and implementation.

Greentree Management Console

Greentree's Site Management Console provides live visibility of your backups and recoveries. This enables a consistent approach to implementing and managing your backup &

recovery strategy. The display can be easily understood by people who are not trained system administrators, enabling them to identify problems that may require expert assistance.

When Disaster Strikes

The necessity of having reliable backup & recovery was graphically demonstrated in Christchurch's devastating earthquakes. Read the story [here](#).

GREENTREE SECURE PRODUCT FEATURES

FUNCTION	INSTANT	TOTAL	PARTIAL
Rapid Hot Swap to a live Greentree standby system	✓	✗	✗
Support for additional hot swap standby systems	✓	✗	✗
Automated management of database update journals	✓	✓	✗
Performance enhancing Multi-threaded backups [Backups are faster, more efficient]	✓	✓	✗
Management console to provide visibility of Primary and Secondary (Hot Swap) server status	✓	✗	✗
Management console to provide visibility of Backup status and key system and environment information	✓	✓	✗
Scheduling of backups independently of the Print and Task Queue	✓	✓	✗
Automate naming of backup folder destinations	✓	✓	✓

Secure Caveat – Must Read

All technology solutions are a combination of software and hardware components, and this is especially true in the world of backup and recovery systems. You must regularly test that these systems are working correctly in your environment. Undertaking full simulated recoveries is mandatory good business practice.

For more information about
Greentree & ERP Software
please get in touch:

info@prerogative.co.uk

0870 752 2971

www.prerogative.co.uk

